

BD SurePath™ Pap test technology is changing cervical cancer screening for the better.

BD SurePath™ Pap test unique collection device(s) all have detachable heads so you get more of the sample everytime.¹

BD SurePath™ Pap test is easy to use:

step 1. Collect

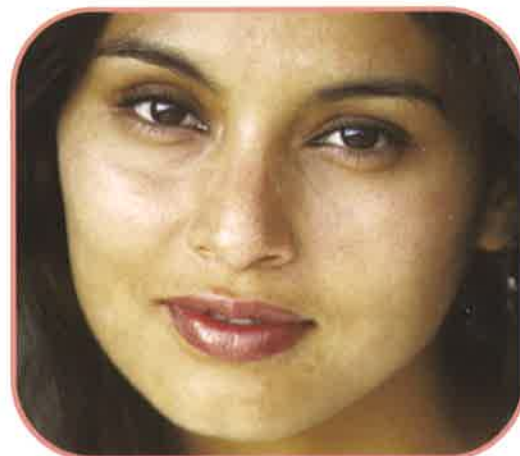
Collect the cytology sample using either a broom-like device or combination brush/plastic spatula with detachable heads. Follow manufacturer's collection instructions for detachable head device(s).



- ▶ Since the heads of these devices are detached and deposited into the vial, 100% of the collected sample can be sent to the lab for processing.
- ▶ Alternately, a rinse and swirl technique can result in discarding on average 37% of the sample collected during cell transfer¹, which could mean the difference between finding an abnormality and missing it.

step 2. Drop

Drop the detachable head device(s) into the BD SurePath™ vial.



step 3. Send

Place the cap on the vial and tighten. Send the BD SurePath™ vial to the lab for processing.



BD SurePath™ test is the only Pap test available today with a 64.4% increase in HSIL+ detection.²



Helping all people
live healthy lives

¹ Bigras G et al. *Journal of Lower Genital Tract Disease*, Vol. 7(3), 2003: 168-174.

² Compared to conventional Pap smear. See BD PrepStain™ Slide Processor package insert, Direct-to-Vial study population, Table 26 for these clinical sites and these study populations. Note: Site to site variations in performance are expected.

BD SurePath™ test is easy to use with several collection device choices.

Option 1

BD SurePath™ Test Sample Collection with Broom-Type Detachable Head Device.³

1. Collect

Insert the Rovers Cervex-Brush® into the endocervical canal. Rotate brush five times in a clockwise direction.



2. Drop

Drop the detachable head of the device into the BD SurePath™ vial.



3. Send

Place the cap on the vial and tighten. Send the BD SurePath™ vial to the lab for processing.

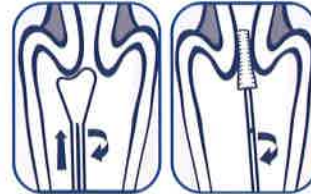


Option 2

BD SurePath™ Test Sample Collection with Combination Brush/Plastic Spatula Detachable Head Device.⁴

1A. Collect

Insert the contoured end of the Pap Perfect® plastic spatula and rotate 360° around the entire exocervix.



1B. Collect

Insert Cytobrush® Plus GT into the endocervix until only the bottom-most bristles are exposed at the os. Slowly rotate 1/4 to 1/2 turn in one direction. To reduce unnecessary bleeding, do not over-rotate brush.

2A. Drop

Snap the device handle at the red scoring line and drop the detachable head of the device into the BD SurePath™ vial.



2B. Drop

Snap the device handle at the red scoring line and drop the detachable head of the device into the BD SurePath™ vial.

3A. Next

Place cap on vial; do not tighten cap until 'Step #3B Send.' Go to Cytobrush® Plus GT 'Step #1B. Collect.'



3B. Send

Place the cap on the vial and tighten. Send the BD SurePath™ vial to the lab for processing.

Contraindication: The Cervex-Brush® should not be used on patients after the first 10 weeks of pregnancy.

Warning: Do Not Use Cytobrush® Plus GT on pregnant patients or for endometrial sampling. See BD SurePath™ Sample Collection Kit product insert for complete Directions for Use.

Alternative Methods to Detach Heads of Collection Devices:

Two-Hand 'SNAP'⁴



Do not touch the head of the device while detaching.

Alternative Methods to Detach Heads of Collection Devices:

Cap-Assisted 'SNAP'⁴



Care must be taken to avoid splashing and/or contamination of the head(s) of the device(s).

³ See Rovers® Cervex-Brush® product insert for complete Directions for Use.

⁴ See BD SurePath™ Sample Collection Kit product insert for complete Directions for Use. Cervex-Brush is a product and registered trademark of Rovers B.V., Oss, The Netherlands. BD SurePath™ Sample Collection Kit is manufactured by Medscand, a Cooper Surgical Company, Trumbull, CT.

Cervex-Brush is a trademark of Rovers Medical Devices, B.V.

CytoBrush and Pap Perfect are trademarks of Cooper Surgical, Inc.

BD, BD Logo and all other trademarks are property of Becton, Dickinson and Company © 2008 BD 980-05666-00 REV E 05/08



Helping all people
live healthy lives